



Key2SafeDriving™ Installation Guide

For use with Windows Mobile® Smartphones



Table of Contents

1. Congratulations.....	3
2. Minimum Requirements	3
Mobile Phone	3
Automobile.....	3
3. Activator Installation	4
4. Phone Software Installation.....	4
Install the Key2SafeDriving™ software to your PC:.....	5
Configure Key2SafeDriving on the Phone	8
5. Verify Installation	11
Start Safe Driving Mode™	11
Emergency Dialing on a Touch Screen Phone.....	11
Emergency Dialing on a non-Touch Screen Phone	12
Manage Profile	12
End Safe Driving Mode™	12
Need More Help?	14



1. Congratulations

Congratulations on your purchase of Key2SafeDriving™. At Safe Driving Systems, our vision is to create a safer driving environment for everyone. Key2SafeDriving™ prevents distraction related fatalities, accidents, injuries and costs associated with the use of mobile phones while driving.

The Key2SafeDriving™ solution combines mobile phone software with a hardware Activator™ that installs in your car. This guide contains the instructions on installing the Activator™ and setting up the Key2SafeDriving™ software on Windows Mobile® phones. Installation instructions for other phones can be found on our web site (<http://www.SafeDrivingSystems.com/support>).

Reminder: The initial installation should be done by the parent, guardian, manager, or administrator. During the installation process you will be setting a password (or PIN) that is required to modify the Key2SafeDriving™ configuration after the software is installed.

2. Minimum Requirements

Mobile Phone

- Phone running Windows Mobile® 6.0 or above
- Bluetooth
- 10 Mbytes of free storage space
- Texting plan (the average user can expect Key2SafeDriving™ to send roughly 100 text (SMS) messages a month)
- Windows Mobile® sync software installed on personal computer
 - Microsoft ActiveSync® for Windows XP® users
 - Windows Mobile Device Center for Windows Vista® and Windows 7® users
- Instructions for alternate installation methods can be found at our web site (<http://www.SafeDrivingSystems.com/support>).

Automobile

- OBD II port (standard in all cars manufactured in the North America after 1996)



3. Activator Installation

The Key2SafeDriving™ Activator® is designed to be a “Plug and Forget” device. Once installed, you should never need to worry about it again.

To install the Activator®

1. **Locate the OBD II port.** The OBD II (or “On Board Diagnostics”) port should be located under the dashboard on the driver’s side of the vehicle. It should be within 18 inches of the front seat. Some vehicles may hide the OBD II port behind an access panel or underneath a coin tray.
2. **Plug Activator® into the OBD II port**



Figure 1: Typical OBD II port

That’s all you need to do for the hardware installation.

4. Phone Software Installation

Installing the Key2SafeDriving™ software on your Windows Mobile® phone is a simple process. In only a few steps you will have the application installed on your device.

Before you begin, ensure that you have the latest version of the Windows Mobile Device Center® (or Microsoft ActiveSync® for Windows XP® users) installed on your computer. The Windows Mobile Device Center® software ships with your mobile phone, but can also be downloaded from Microsoft’s site (<http://www.microsoft.com/windowsmobile/en-us/downloads/microsoft/device-center-download.aspx>).

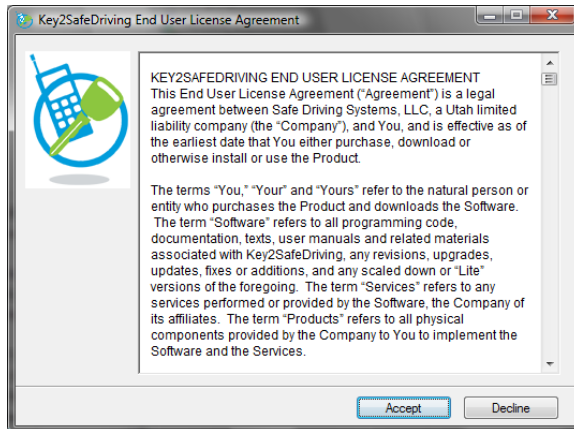


Install the Key2SafeDriving™ software to your PC:

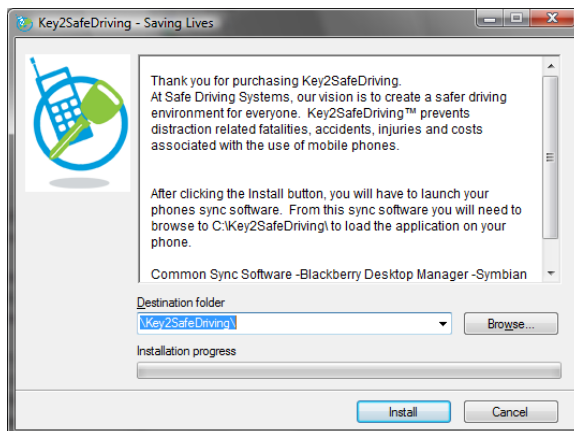
1. Copy the Key2SafeDriving™ installation file you received to a folder on your PC.

Note: There are different versions of the installer depending on whether or not you have a touch screen phone. Use K2SDWMP1.0.exe for touch screen phones, and K2SDWMS1.0.exe for non-touch screen phones.

2. From the Windows Explorer, browse to the installation file and double click on it.
3. Accept the Key2SafeDriving End User License Agreement.



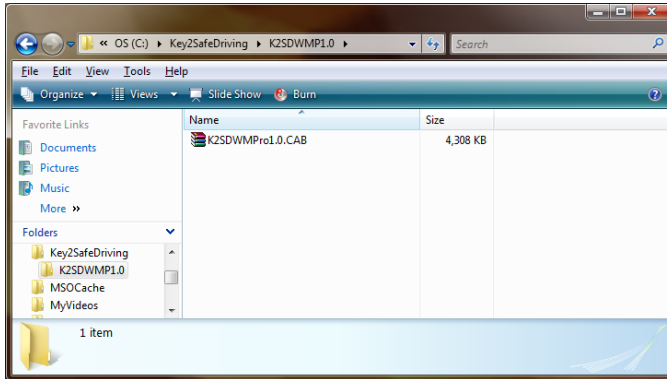
4. Specify a Destination Folder for the Windows Mobile® files. Accepting the default will place the files in C:\Key2SafeDriving\WinMo\ .



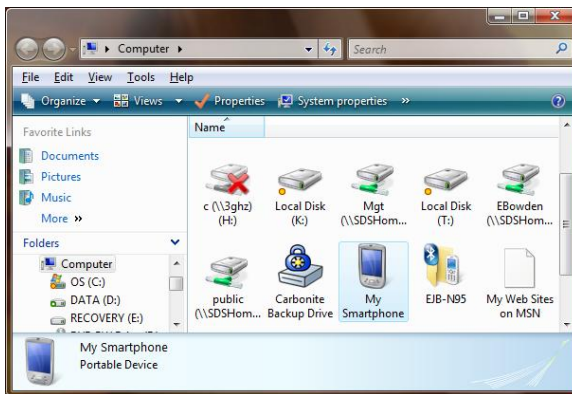
5. Launch two Windows Explorers by holding down the Windows key (the key with the Windows logo in between the Ctrl and the Alt keys) and tapping the E key twice



- In one Explorer window, browse to the location of the Key2SafeDriving™ for Windows Mobile installer that you specified in Step 4. Default should be: C:\Key2SafeDriving\WinMo\ .
- Browse to the .CAB file (either K2SDWMP1.0.CAB for touch screen phones or K2SDWMS1.0.CAB and Certs.CAB for non-touch screen phones.).



- Switch to the second Windows Explorer window and connect your Windows Mobile® phone to your computer using a USB cable. Your phone will show up as a new device.

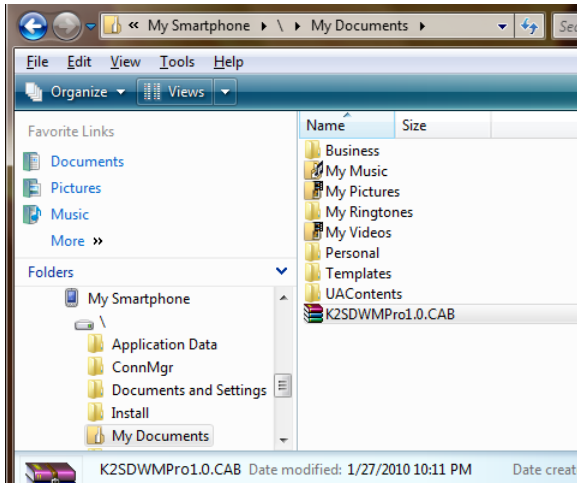


Note: each phone will have a different name. Find the device that matches your Smartphone.

- Double click on this new device and browse to the My Documents folder.



10. Drag the .CAB file(s) from the first Explorer window to the My Documents folder on your device.



11. Disconnect your phone from the USB cable. The rest of the installation will be performed from the Windows Mobile phone.



Configure Key2SafeDriving on the Phone

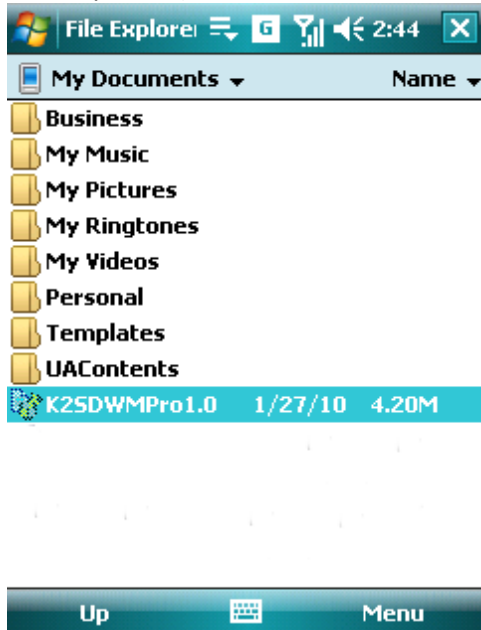
From the phone you will need to configure the application.

12. Launch the File Explorer on the phone, by selecting Start and then File Explorer.

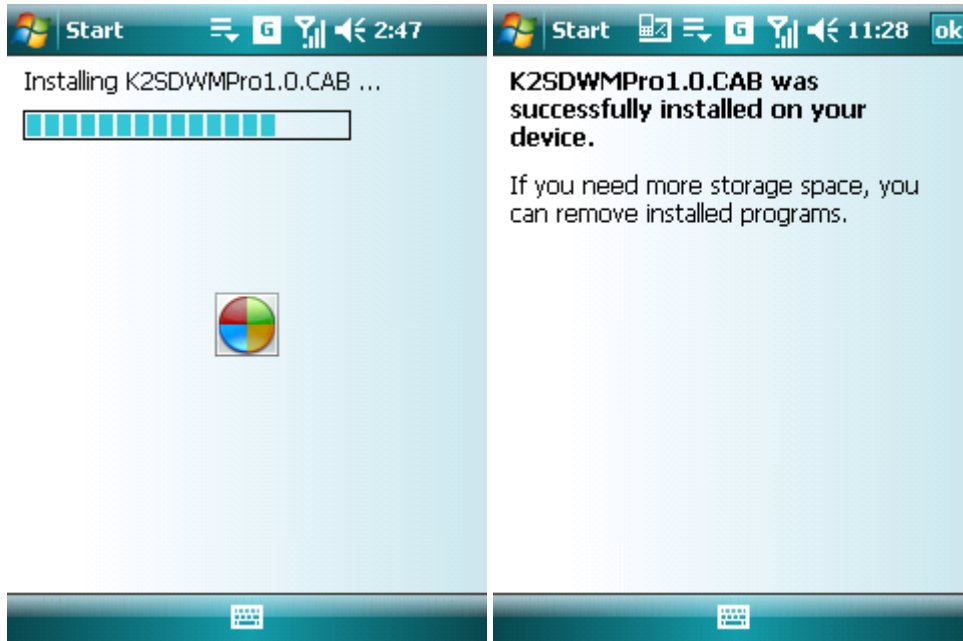


13. Browse to the My Documents folder.

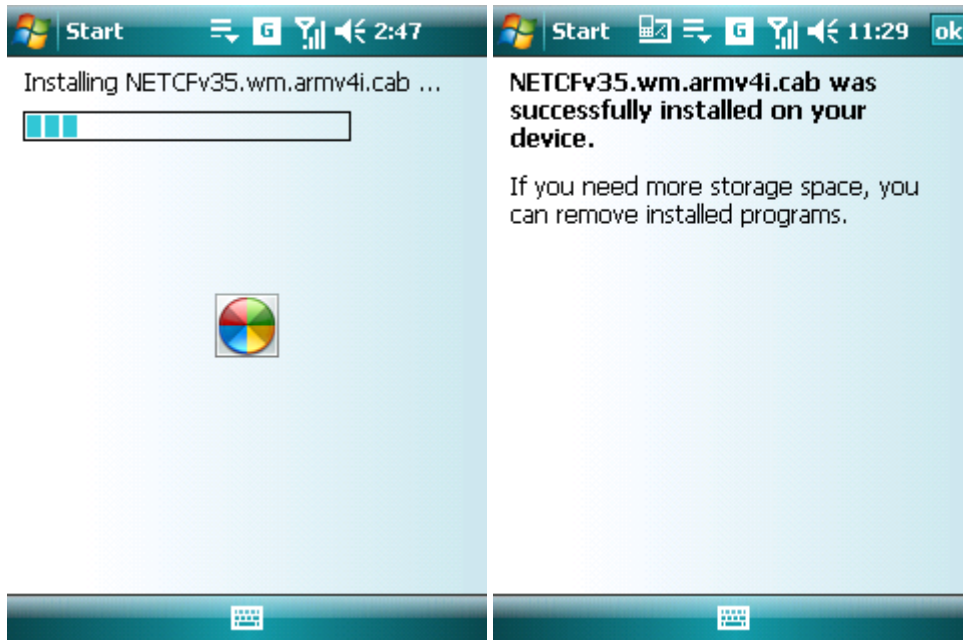
14. If a Certs.CAB file is present, select it first. Then select the installer file(s) that you copied over in Step 10 (either K2SDWMP1.0.CAB for touch screen phones or K2SDWMS1.0.CAB for non-touch screen phones). This will launch the installer.



15. The installer will show a status bar. When it is finished select OK (in the upper right corner on touch screen phones) or select Done on non-touch screen phones.



16. This process will repeat two more times with different files. When each step is finished, select OK.



17. The phone will display the following K2SD-Installation screen.



18. Enter a four digit PIN. This PIN will be used to protect the profile management features, and will ensure that only you can make changes to the configuration. Remember this PIN. If you forget it, you will have to reinstall the application.

Reminder: This step should be performed by the parent, guardian, manager, or administrator. During the installation process you will be setting a password (or PIN) that is required to modify the Key2SafeDriving™ configuration after the software is installed.



19. Enter an administrative phone number. This phone number must be able to receive text messages. This number will be used to notify the parent or fleet manager of events on the phone.



20. Click the OK button and then confirm your PIN and Admin Number.



Key2SafeDriving™ is now installed on your phone.

5. Verify Installation

With the software correctly installed, we recommend that you verify the installation.

This section describes how to use the various features of the Key2SafeDriving™ product. Following these instructions will allow you to verify the installation. It is assumed that the software is installed on your mobile phone and the Activator® is installed in your car.

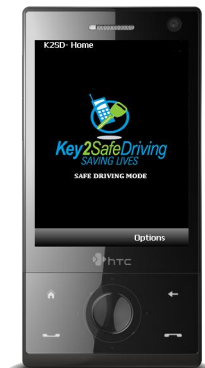
Start Safe Driving Mode™

1. Take the phone to the car the Activator™ installed.
2. Start the car.
3. Within 30 seconds the phone will enter Safe Driving Mode™, which is a black screen with the Key2SafeDriving logo.

From the Safe Driving Mode™ screen you can make emergency calls or you may modify the Key2SafeDriving™ settings (if you know the PIN).

Emergency Dialing on a Touch Screen Phone

While in Safe Driving Mode™



1. Tap the red cross.
2. K2SD will display all emergency numbers including 911.
3. Tap the number you wish to dial.

The phone will call that number.

Emergency Dialing on a non-Touch Screen Phone

While in Safe Driving Mode™

1. Select Options.
2. Select Emergency Dialing. K2SD will display all emergency numbers including 911.
3. Select the number to dial.

The phone will call that number.

Key2SafeDriving™ is Public Safety Answering Point (emergency 911) compliant; this means that after dialing 911, emergency services may need to call back on a number other than 911. If the user dials 911 while in Safe Driving Mode™, the phone will send a text message to the parent (or administrator) as well as go into unrestricted mode for three hours, thus allowing emergency services to call in.

Manage Profile

From the K2SD-Manage Profile screen you may configure Key2SafeDriving™ settings.

4. Select Options
5. Select Manage Profile
6. Enter your PIN.

End Safe Driving Mode™

7. Turn off the car
8. In about 20 seconds the phone will drop out of Safe Driving Mode and you will be able to use the phone as normal.



End User License Agreement

BY USING THIS KEY2SAFEDRIVING, YOU ARE AGREEING TO BE BOUND BY THE SAFE DRIVING SYSTEMS, LLC. TERMS AND CONDITIONS FOUND ONLINE AT WWW.SAFEDRIVINGSYSTEMS.COM/EULA/. THE FOLLOWING DETAIL SOME OF THE TERMS OF USE:

YOU EXPRESSLY ACKNOWLEDGE AND AGREE THAT USE OF THE PRODUCT IS AT YOUR SOLE RISK AND THAT THE ENTIRE RISK AS TO SATISFACTORY QUALITY, PERFORMANCE, ACCURACY AND EFFORT IS WITH YOU. TO THE MAXIMUM EXTENT PERMITTED BY APPLICABLE LAW, THE PRODUCT, THE PRODUCTS AND THE SERVICES ARE PROVIDED "AS IS" AND "AS AVAILABLE," WITH ALL FAULTS AND WITHOUT WARRANTY OF ANY KIND, AND THE COMPANY HEREBY EXPRESSLY DISCLAIMS ALL WARRANTIES AND CONDITIONS WITH RESPECT TO THE SOFTWARE, THE PRODUCTS AND ANY SERVICES, EITHER EXPRESS, IMPLIED OR STATUTORY.

TO THE EXTENT NOT PROHIBITED BY LAW, IN NO EVENT SHALL THE COMPANY BE LIABLE FOR PERSONAL INJURY, OR ANY INCIDENTAL, SPECIAL, INDIRECT OR CONSEQUENTIAL DAMAGES WHATSOEVER, INCLUDING, WITHOUT LIMITATION, DAMAGES FOR LOSS OF PROFITS, LOSS OF DATA, BUSINESS INTERRUPTION OR ANY OTHER COMMERCIAL DAMAGES OR LOSSES, ARISING OUT OF OR RELATED TO YOUR USE OR INABILITY TO USE THE SOFTWARE.

Federal Communication Commission Interference Statement

NOTE: The Activator™ has been tested and found to comply with the limits for a Class B digital device, pursuant to Part 15 of the FCC Rules. These limits are designed to provide reasonable protection against harmful interference in a residential installation. This equipment generates, uses and can radiate radio frequency energy and, if not installed and used in accordance with the instructions, may cause harmful interference to radio communications. However, there is no guarantee that interference will not occur in a particular installation.

If this equipment does cause harmful interference to radio or television reception, which can be determined by turning the equipment off and on, the user is encouraged to try to correct the interference by one or more of the following measures:

- Reorient or relocate the receiving antenna.
- Increase the separation between the equipment and receiver.
- Connect the equipment into an outlet on a circuit different from that to which the receiver is connected.
- Consult the dealer or an experienced radio/TV technician for help.

CAUTION: Any changes or modifications not expressly approved by the grantee of this device could void the user's authority to operate the equipment.

This device complies with Part 15 of the FCC Rules. Operation is subject to the following two conditions: (1) this device may not cause harmful interference, and (2) this device must accept any interference received, including interference that may cause undesired operation.

This transmitter must not be co-located or operating in conjunction with any other antenna or transmitter.

FCC Radiation Exposure Statement:

This equipment complies with FCC radiation exposure limits set forth for an uncontrolled environment. This equipment should be installed and operated with a minimum distance of 20cm between the radiator and your body.



Need More Help?

*Technical support questions can be emailed to
support@SafeDrivingSystems.com
For more product information visit our web site at
www.SafeDrivingSystems.com*

Trademarks

Windows XP, Windows Vista, Windows 7, ActiveSync, Windows Device Center, and Windows Mobile are registered trademarks of Microsoft Corporation in the United States and other countries.

